

Metal Bellow Coupling – Model CTB-4

with conical hubs and conical bushings

- with conical hubs
- high clamping forces
- low moment of inertia
- easy to mount
- wear and maintenance free
- hub material: steel
- bellows: stainless steel
- special designs such as welded versions or stainless steel on request

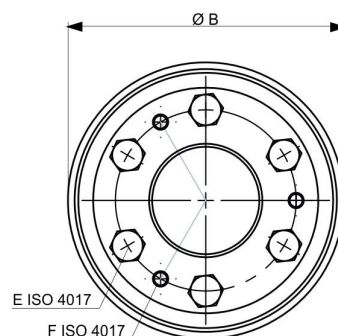
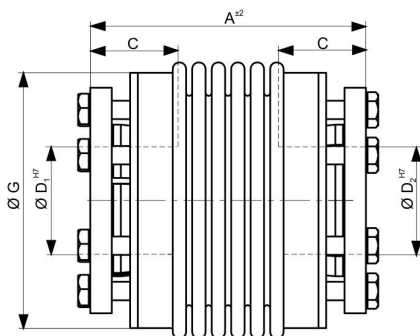


properties	unit of measurement	unit symbol	15	30	60	150	200	300	500	800	1500	4000
rated torque	(Nm)	T _{KN}	15	30	60	150	200	300	500	800	1500	4000
length	(mm)	A ^{±2}	48 55	56 64	66 76	74 86	77 89	89 103	97 110	114	141	196
outside diameter bellows	(mm)	B	49	55	66	81	90	110	124	133	157	200
fit length	(mm)	C	19	21	27	32	32	41	41	49	61	81
inner-Ø H7	(mm)	D _{1/2}	10-22	12-23	12-29	15-37	15-44	24-56	24-56	30-60	35-70	50-100
6 x fastening screws		E	M4	M5	M5	M6	M6	M8	M8	M10	M12	M16
tightening torque	(Nm)	E	4	6	8	12	14	18	25	40	70	120
3 x draw-off screws		F	M4	M4	M5	M5	M5	M6	M6	M8	M8	M10
outside diameter hub	(mm)	G	45	50	61	74	83	103	114	116	141	181
moment of inertia	(10 ⁻³ kgm ²)	J _{ges}	0,1 0,1	0,2 0,2	0,4 0,4	1 2	2 3	5 6	9 10	13	35	86
approximate weight	(kg)		0,2	0,4	0,8	1,6	2	3,7	4	6	8	24
												CT-B4-24-01

Bellows glued up to series 500 series and welded from series 800.

properties	unit of measurement	15	30	60	150	200	300	500	800	1500	4000
number of waves		4 6	4 6	4 6	4 6	4 6	4 6	4 6	6	5	8
torsional stiffness approx.	(10 ³ Nm/rad)	22 22	39 35	93 53	177 107	255 200	535 405	400 300	480	1215	3670
spring stiffness axial approx.	(N/mm)	38 18	52 32	76 52	86 65	94 63	112 74	72 48	110	322	936
spring stiffness lateral approx.	(N/mm)	460 137	1435 215	1400 260	1620 350	2170 640	3860 1140	3010 840	2000	3600	6920
axial misalignment	(mm ±)	1 2	1 2	1,5 2,0	2 3	2 3	2,5 3,5	2,5 3,5	3,5	3,5	3,5
lateral misalignment	(mm ±)	0,15 0,20	0,2 0,2	0,20 0,25	0,20 0,25	0,25 0,30	0,25 0,30	0,30 0,35	0,35	0,35	0,4
angular misalignment	(°)	1,0 1,5	1,0 1,5	1,0 1,5	1,0 1,5	1,0 1,5	1,0 1,5	1,0 1,5	1,5	1,5	1,5

Temperature range: -30°C to +100°C



E ISO 4017

F ISO 4017